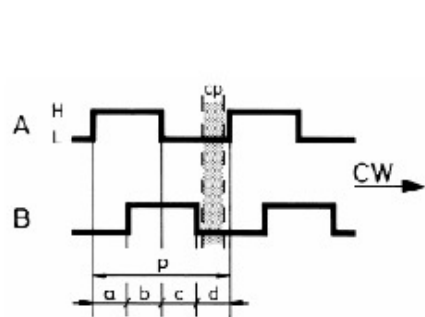


Serie ESH140

Ausgangskanäle / Output channel

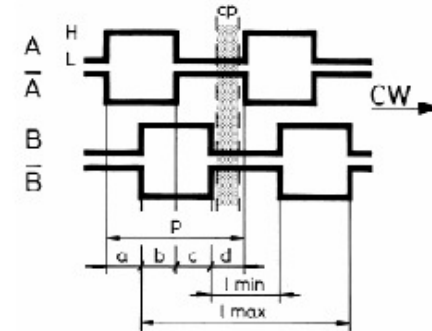
M70

cp = Rasterabstand / Click point



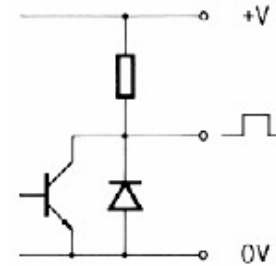
M74

p = Periode

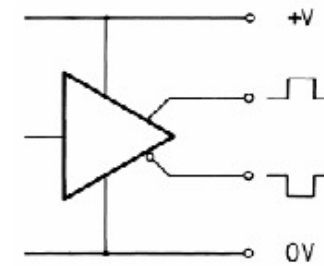


Ausgangstreiber / Output driver

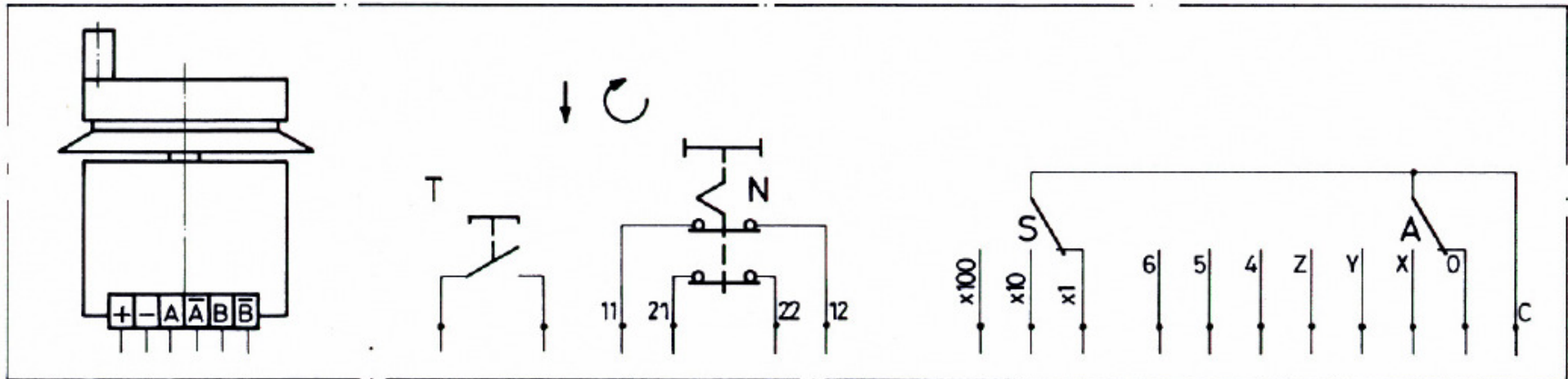
Pull up (2 K Ω intern)



Line driver (RS 422)



Elektrische Anschlüsse / Electrical connection



Serie ESH140

Auswahltabelle / Selection table M70
(TL)

A1...6

S1...3

N61

N62

TR

Anschlüsse / Connection	+	-	A	B	A'	B'	C	0	X	Y	Z	4	5	6	x ¹	x ¹⁰	x ¹⁰⁰	11	12	21	22				
ESH140.1.1	8	9	1	2			-		-	-	-	-	-	-	-	-	-	-	-	-	-	-	-	-	
ESH140.1.2.1	8	9	1	2			-		-	-	-	-	-	-	-	-	-	5	6	7	10	-	-	-	
ESH140.1.6.3.2	8	9	1	2			17		11	12	13	14	15	16	18	3	4	-	-	-	-	-	-	-	
ESH140.1.6.3.1.2	8	9	1	2			17		11	12	13	14	15	16	18	3	4	5	6	-	-	-	-	-	
ESH140.1.6.3.2.2	8	9	1	2			17		11	12	13	14	15	16	18	3	4	5	6	7	10	-	-	-	
ESH140.1.2.1.1	8	9	1	2			-		-	-	-	-	-	-	-	-	-	5	6	7	10	3	4	-	
ESH140.1.6.3.1.1.2	8	9	1	2			17		11	12	13	14	15	16	18	3	4	5	6	-	-	-	-	7	10
ESH140.2.1	8	9	1	2	3	4	-		-	-	-	-	-	-	-	-	-	-	-	-	-	-	-	-	
ESH140.2.2.1	8	9	1	2	3	4	-		-	-	-	-	-	-	-	-	-	5	6	7	10	-	-	-	
ESH140.2.6.3.2	8	9	1	2	3	4	17		11	12	13	14	15	16	18	5	6	-	-	-	-	-	-	-	
ESH140.2.6.3.1.2	8	9	1	2	3	4	17		11	12	13	14	15	16	18	7	10	5	6	-	-	-	-	-	
ESH140.2.4.3.2.2	8	9	1	2	3	4	17		11	12	13	14	-	-	18	15	16	5	6	7	10	-	-	-	
ESH140.2.4.3.1.1.2	8	9	1	2	3	4	17		11	12	13	14	-	-	18	7	10	5	6	-	-	-	15	16	

- 1 Weiss / White
- 2 Braun / Brown
- 3 Grün / Green
- 4 Gelb / Yellow
- 5 Grau / Grey

- 6 Rosa / Pink
- 7 Blau / Blue
- 8 Rot / Red
- 9 Schwarz / Black
- 10 Violet / Purple

- 11 Grau-Rosa / Grey-Pink
- 12 Rot-Blau / Red-Blue
- 13 Weiss-Grün / White-Green
- 14 Braun-Grün / Brown-Green
- 15 Weiss-Gelb / White-Yellow

- 16 Gelb-Braun / Yellow-Brown
- 17 Weiss-Grau / White-Grey
- 18 Grau-Braun / Grey-Brown

Kabelfarben nach / Cable colour at DIN 47100

Unbenutzte Anschlüsse sind vor Inbetriebnahme zu isolieren / Unused terminals should be insulated before initial start-up