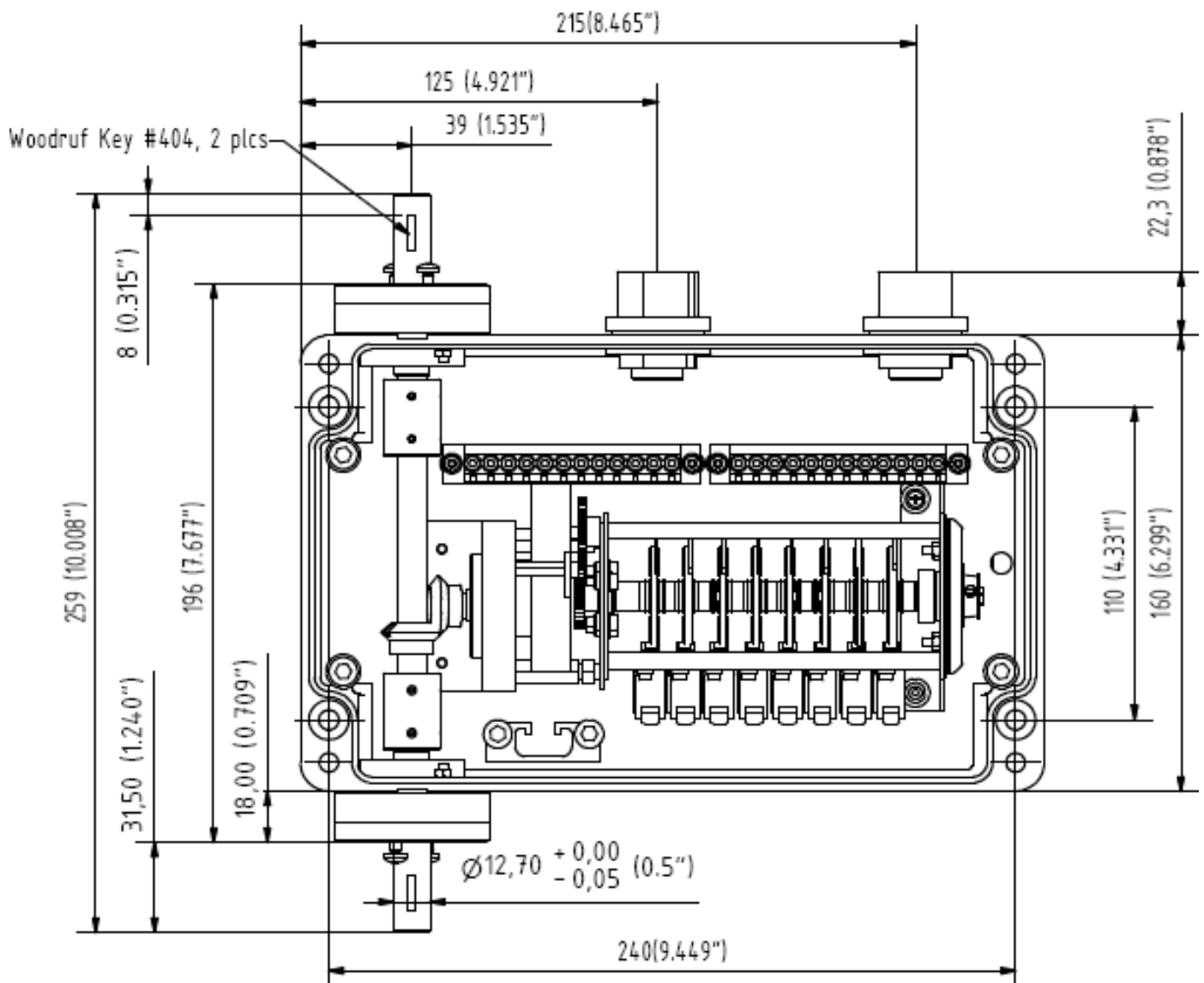


Serie MR 222



- Combines gear reducer, coupling and cam switches into one compact, heavy duty unit
- Double ended shaft model
- ½" Ø stainless steel shaft with #404 Woodruff Key slot
- Industrial grade, heavy duty sealed bearings
- NEMA 4 die cast aluminium or NEMA 4X stainless steel enclosure option
- Wide range of step-up or step-down gear options, from 1:1 to 2500:1
- 2, 4, 6 or 8 cam switch channels
- Easy to replace, heavy duty limit switches
- Two conduit wiring connections tapped for ½" NPT
- Industrial application:
Cranes, hoists, presses, packers, machine tools, handling devices and other similar operations where motion is expressed in shaft rotation

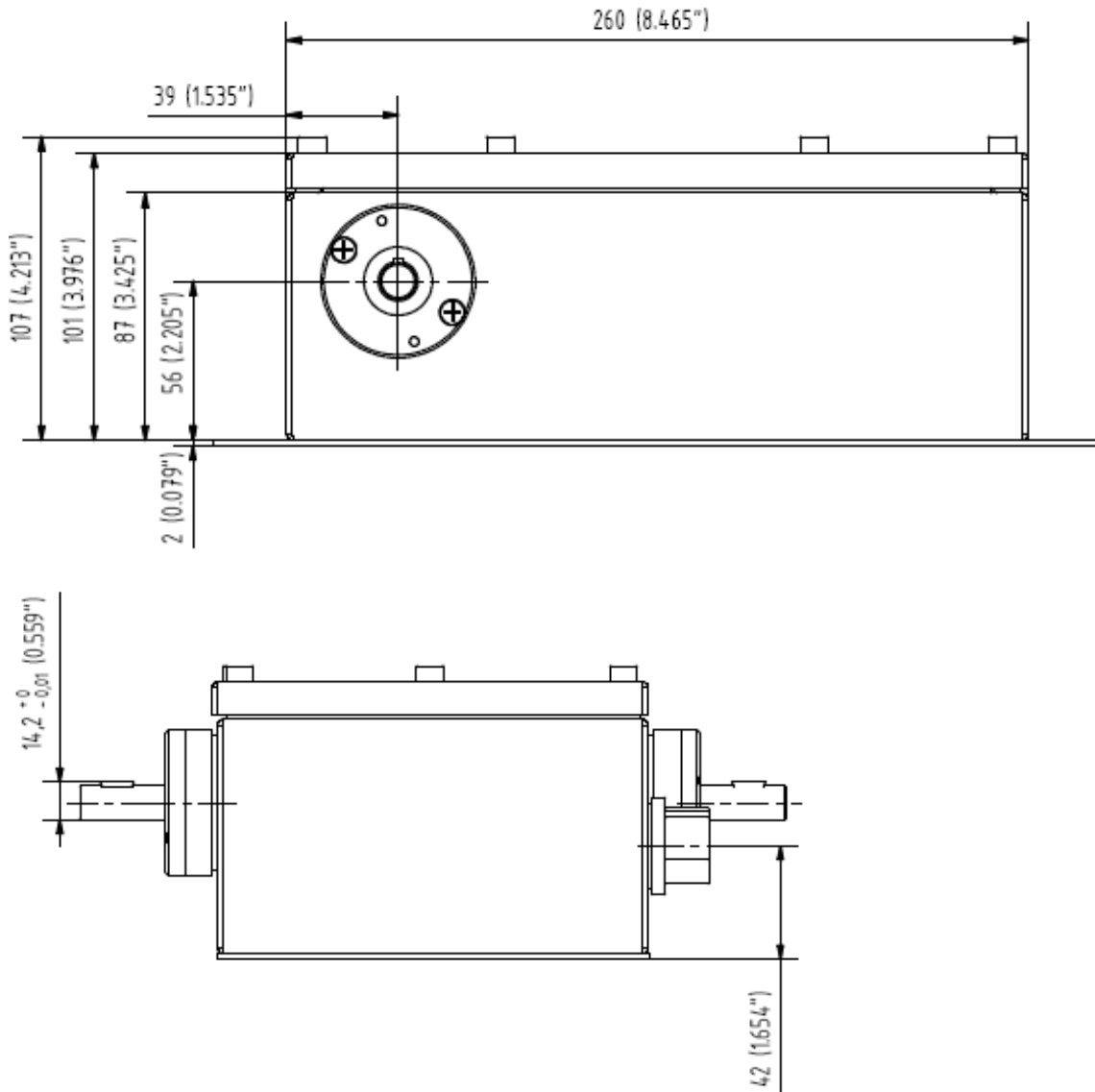
Outline drawing



Technische Änderungen vorbehalten / Subject to change without prior notice

Serie MR 222

Outline drawing



Serie MR 222

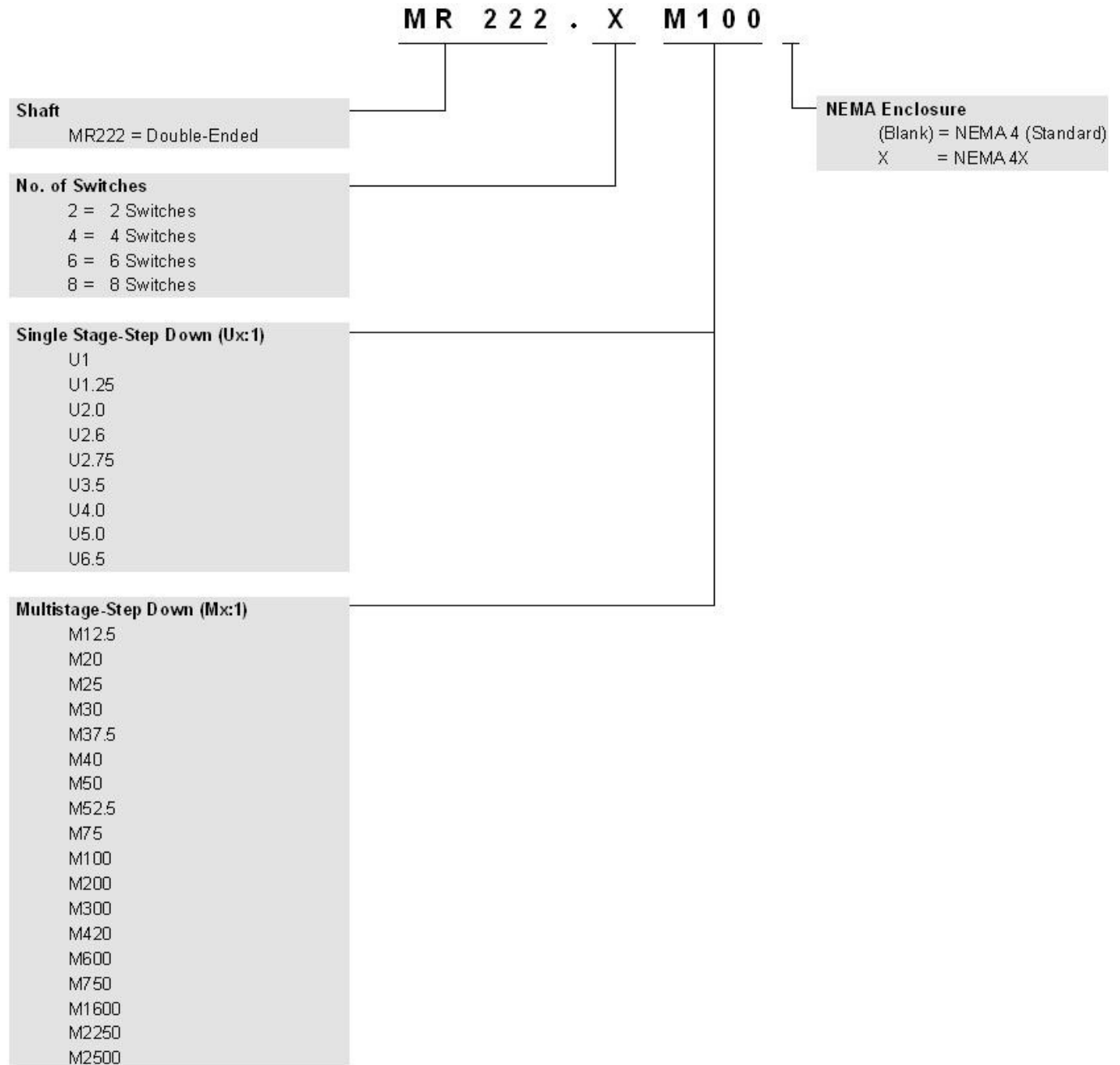
Specifications subjects to change without notice

Enclosure Ratings	Type 1/4/4X + IP 66 Type 1/4/4X + IP 66	Note: IP rating only applies when unit installed, connected and torqued properly. Die cast aluminium housing with powder coat finish Stainless steel housing
Switch Rating	Permanent Current Resistive Load Inductive Load Motor Load Temperature	10 x 10 ⁶ Cycles 230 VAC / 6A Continuous / 10A Momentary 24 VDC / 6A Continuous / 10A Momentary 230 VDC / Power Factor 0.7 / 3A 125 VDC / 0.5A 80 VDC / 0.75A 40 VDC / 1A 24 VDC / 3A 230 VAC / Power Factor 0.85 / 10A -40°C to +85°C
Cam Programming	1 – 2 (COM – NC) 1 – 3 (COM – NC) Repeatability	With Cam Valley Profile: 4° ...180° (1 ...50%) With Cam Peak Profile: 4° ...356° (1 ...99%) 1.8°
Mechanical Rating	Max. RPM Mechanical Life Max. Side Load Max Axial (Thrust) Load Bearing Life	3000 rpm 10 x 10 ⁶ Cycles (typical) 890 N (200 lbf) to 500 RPM, 445 N (100 lbf) to 1800 RPM 360 N (80 lbf) to 500 RPM, 185 N (40 lbf) to 1800 RPM 10 years (87'660 hours) continuous running with 350 N (78 lbf) side load at 1000 RPM
Wire Range	24-10 AWG	Via Phoenix MKDS 5/3-6.35 COMBICON modular wiring blocks with screw connection
Temperature	-30°C bis +705°C -15°C to +60°C	Storage Temperature Operating Temperature
List of Contents	1. 2. 3. 4. 5. 6. 7. 8.	One geared limit switch unit Supplied with #404 Woodruff Key mounted on each shaft end Protective safety shaft cover installed on each (can be used to cover an unused shaft end) One PSN cam programming tool (stored in internal holder) One Wire Jumper (installed across all COMMONS on terminal block) One copper grounding screw and split washer (installed inside unit) Two waterproof plugs (installed in threaded conduit holes) MR221 / MR222 Series Geared Limit Switch User Guide

Serie MR 222

Order key
Type

Inclination Sensor
MR222



Important: The following gear reductions are UL-proofed: 20:1, 30:1, 40:1, 50:1, 75:1 and 100:1

Replacement Parts:

PSN CAM Programming Key
 Microswitch

Other gear ratios available upon request

This ordering example specifies a MR 222
 double-ended unit in NEMA 4 die cast aluminium case.
 Gear Ratio to be 100:1 and with X switch channels