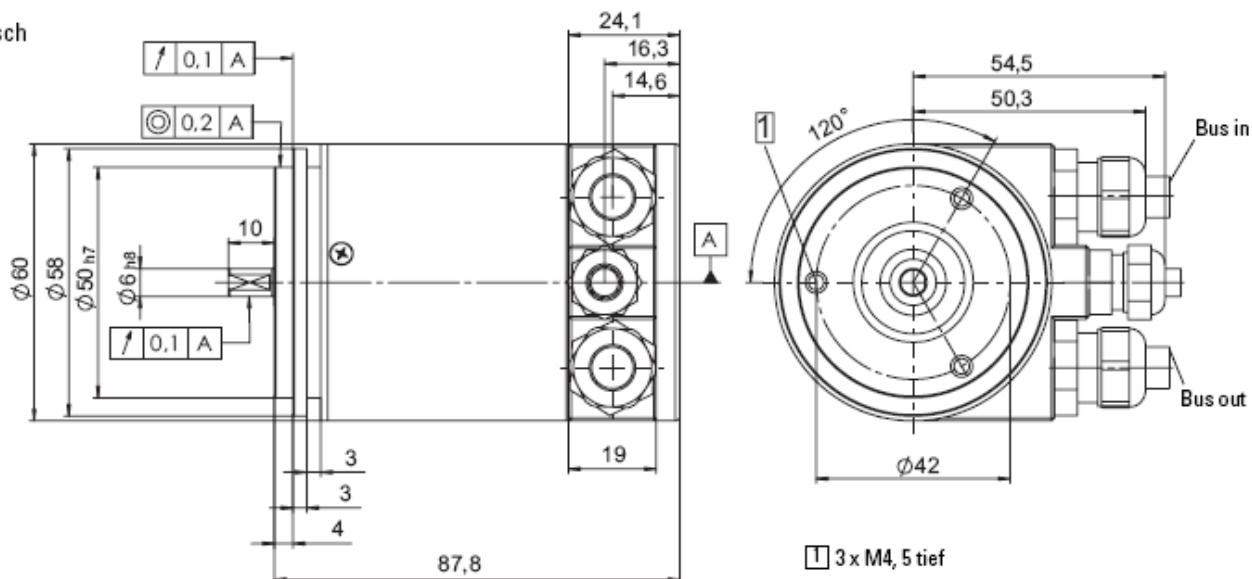


Multiturn ESF 58 CANopen/DeviceNet

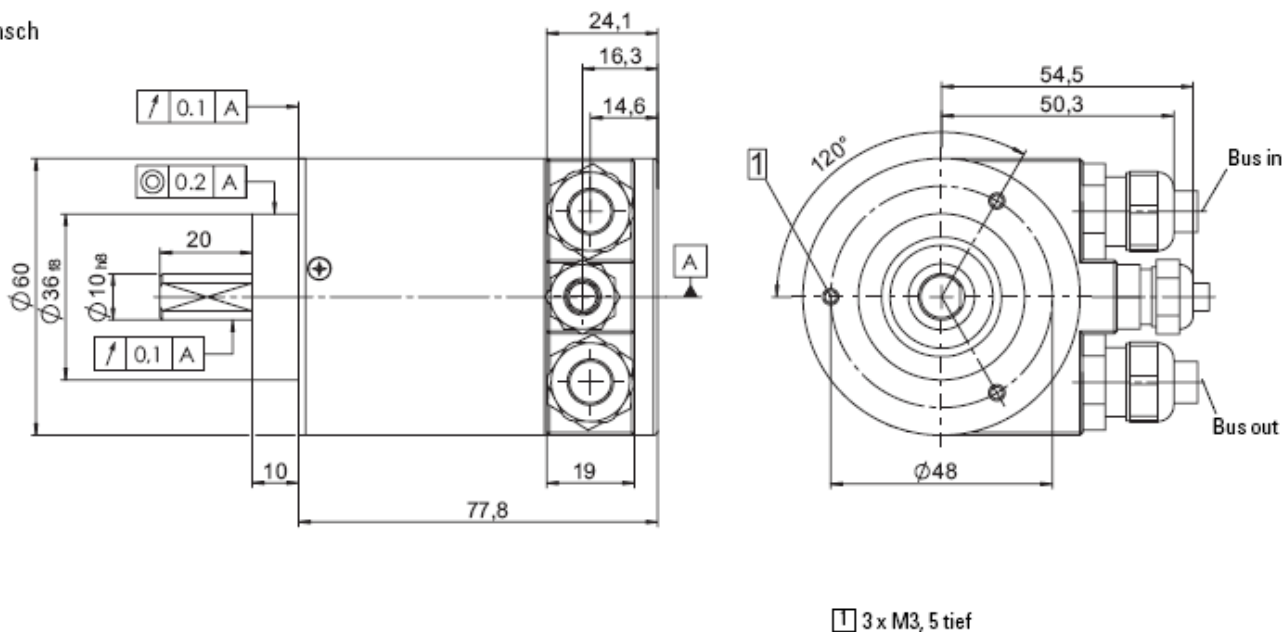
Massbild / Outline drawing

Maßbild (Klemmkastenversion):

Synchroflansch



Klemmflansch



Einsetzbare Kabeldurchmesser

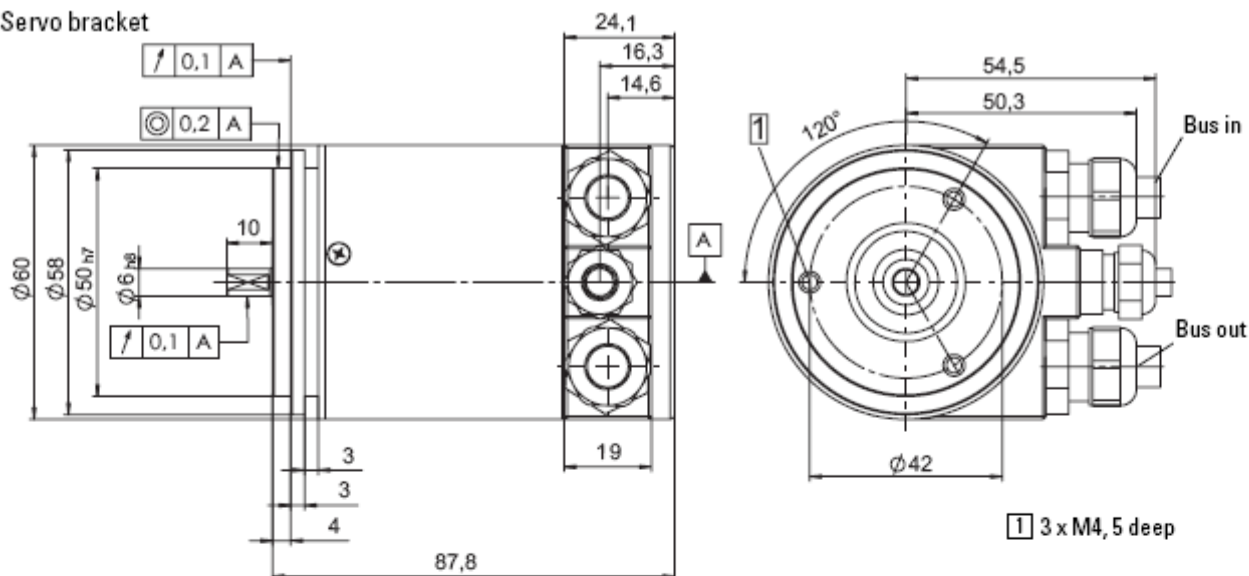
Spannungsversorgung, Kabeldurchmesser 4,5 ... 6,5 mm

Datenleitung, Kabeldurchmesser 8 ... 10 mm

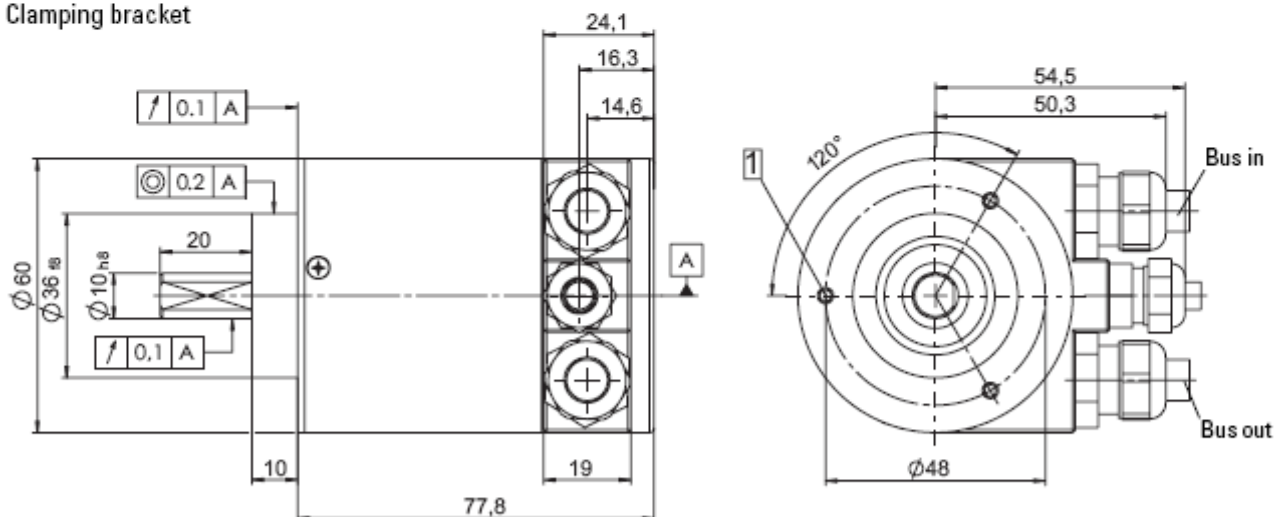
Multiturn ESF 58 CANopen/DeviceNet

Dimension (Terminal box version):

Servo bracket



Clamping bracket



Suitable cable diameter

Supply voltage, cable diameter 4.5 ... 6.5 mm

Data transmission line, cable diameter 8 ... 10 mm