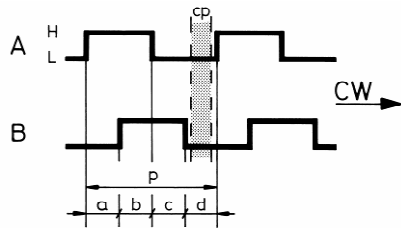


Serie ESH 125

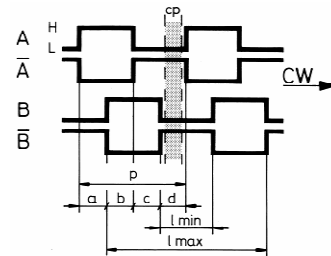
Ausgangskanäle / Output channel

M70
cp = Rasterabstand / Click point

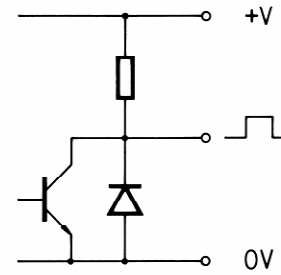


Ausgangstreiber / Output driver

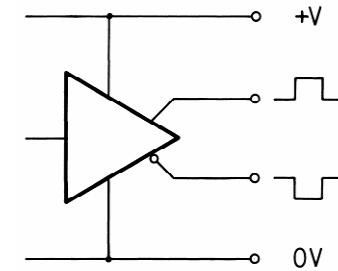
M74
p = Periode



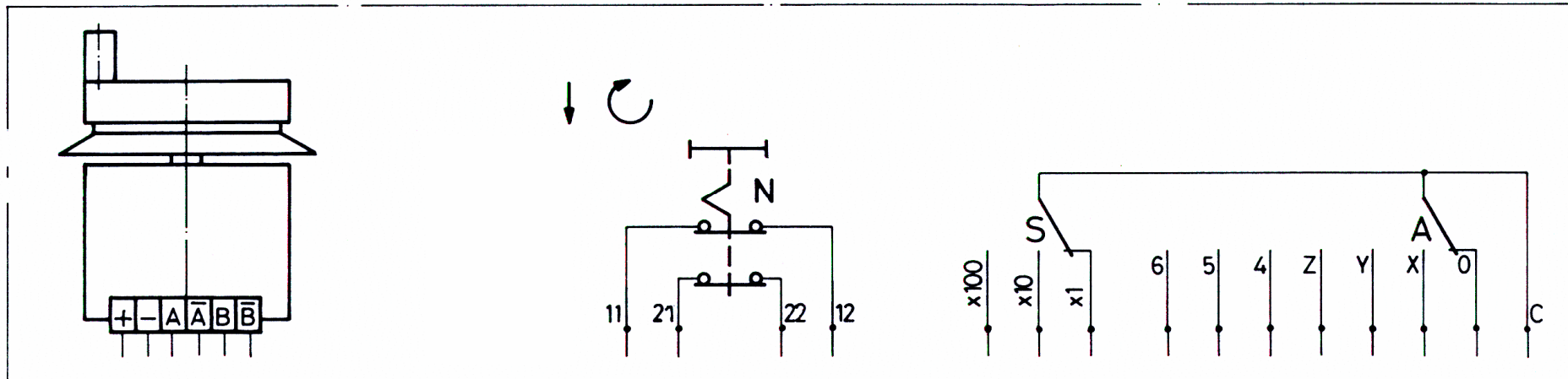
Pull up (2 K Ω intern)



Line driver RS 422)



Elektrische Anschlüsse / Electrical connection



Serie ESH 125

Auswahltabelle / Selection table **M70**

N71

N72

Anschlüsse / Connection	+	-	A	B		11	12	21	22
ESH125.1.1.1	8	9	1	2					
ESH125.1.1.1.1	8	9	1	2		5	6		
ESH125.1.2.1.1	8	9	1	2		5	6	7	10

Auswahltabelle / Selection table **M74**

N71

N72

Anschlüsse / Connection	+	-	A	B	A'	B'	11	12	21	22
ESH125.2.1.1	8	9	1	2	3	4				
ESH125.2.1.1.1	8	9	1	2	3	4	5	6		
ESH125.2.2.1.1	8	9	1	2	3	4	5	6	7	10

- | | |
|-----------------|--------------------|
| 1 Weiss / White | 6 Rosa / Pink |
| 2 Braun / Brown | 7 Blau / Blue |
| 3 Grün / Green | 8 Rot / Red |
| 4 Gelb / Yellow | 9 Schwarz / Black |
| 5 Grau / Grey | 10 Violet / Purple |

Kabelfarben nach / Cable colour at DIN 47100

Unbenutzte Anschlüsse sind vor Inbetriebnahme zu isolieren / Unused terminals should be insulated before initial start-up